

# WIRTSCHAFTLICH, FLEXIBEL, STARK

Economical, flexible, strong - Économique, flexible, forte - Economica, flexible, fuerte

## AUSSTATTUNG

Facilities - Equipements - Instalaciones



Seilwinde  
Cable winch  
Trebil à câble  
Cabrestante



Z-Arm  
Z-boom  
Bras Z  
Brazo en Z



Zusatzabstützträger  
Additional outriggers  
D'autres stabilisateurs  
Adicional estabilizadores

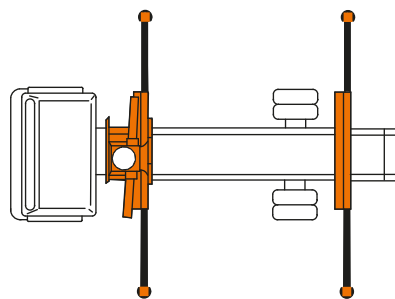
## STEUERUNG

Control - Contrôle - Control



## ABSTÜTZÜBERWACHUNG

Monitoring of the stabilizing support - suivi de l'appui de stabilisation - seguimiento del apoyo estabilización



(EAW) nach EN 12999

Elektr. Überwachung der Abstützweite und des Schwenkwinkels  
Electr. monitoring of the stabilizing support wide and the slewing range  
Contrôle électrique de l'écartement de stabilisatin et de l'angle de rotation  
Control electrico de los estabilizadores y del angulo de rotación

## WERKZEUGE

Tools - Outils - Herramientas



Steinstapelzange  
Brick Stack Grapples  
Pincas á Parpaings  
Pinza



Krangabel  
Pallet fork  
Fourche à palette  
Horquilla de paleta

# ATLAS



**sicher**

safe, sécurité, seguro

**flexibel**

flexible, flexible, flexible

**innovativ**

innovativ, innovante, innovadora

**effizient**

efficient, efficace, eficiente

**kraftvoll**

powerful, puissant, poderoso

## Atlas Maschinen GmbH

**erreichbar**

available, joignable, alcanzado



Stedinger Straße 324  
D-27751 Delmenhorst  
Tel. +49 (0) 4221-491 - 0  
Fax +49 (0) 4221-491-443  
info@atlasgmbh.com

[www.atlasgmbh.com](http://www.atlasgmbh.com)

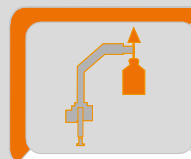
YOUR CONTACT INFORMATION

# ATLAS

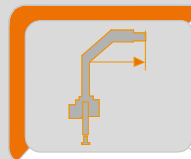
## Krane / Cranes / Grues / Grúas



### Ladekran AK 380.3E



**max : 8300 Kg**



**max : 20,95 m**



**max : 320 bar**

**AVAILABLE & COST EFFECTIVE**

**ATLAS**

- AVAILABLE & COST EFFECTIVE -

**ATLAS**

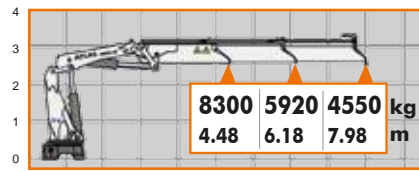
Order Nr. - 6156668

- AVAILABLE & COST EFFECTIVE -

Copyright ©ATLAS Maschinen GmbH 2012

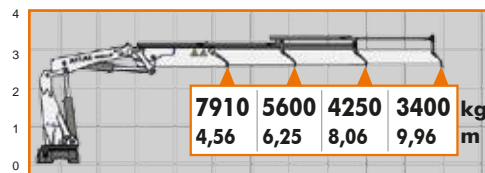
# LASTDIAGRAMME

Load Diagrams-Diagramme de charges-El diagrama de cargas

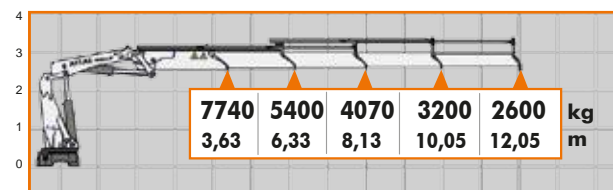


**A2**

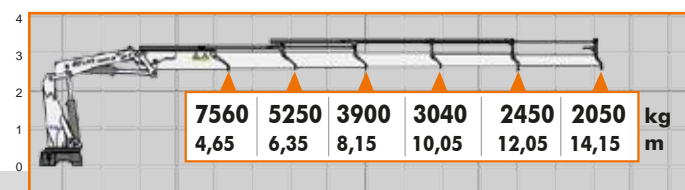
## AK 380.3E



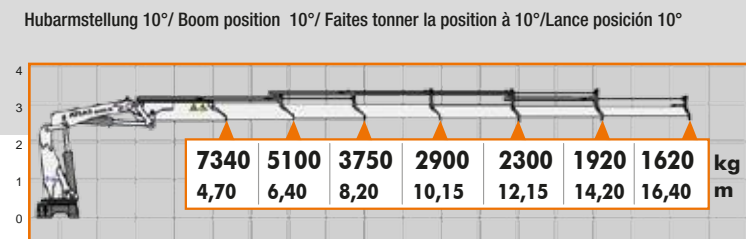
**A3**



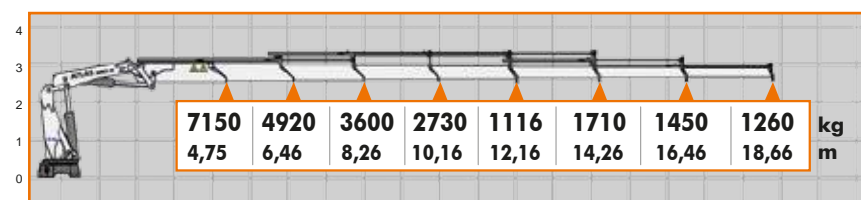
**A4**



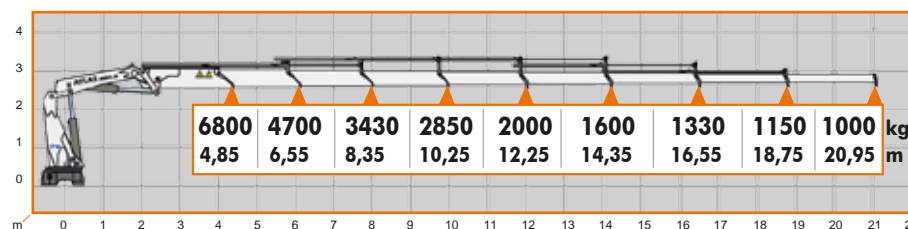
**A5**



**A6**



**A7**



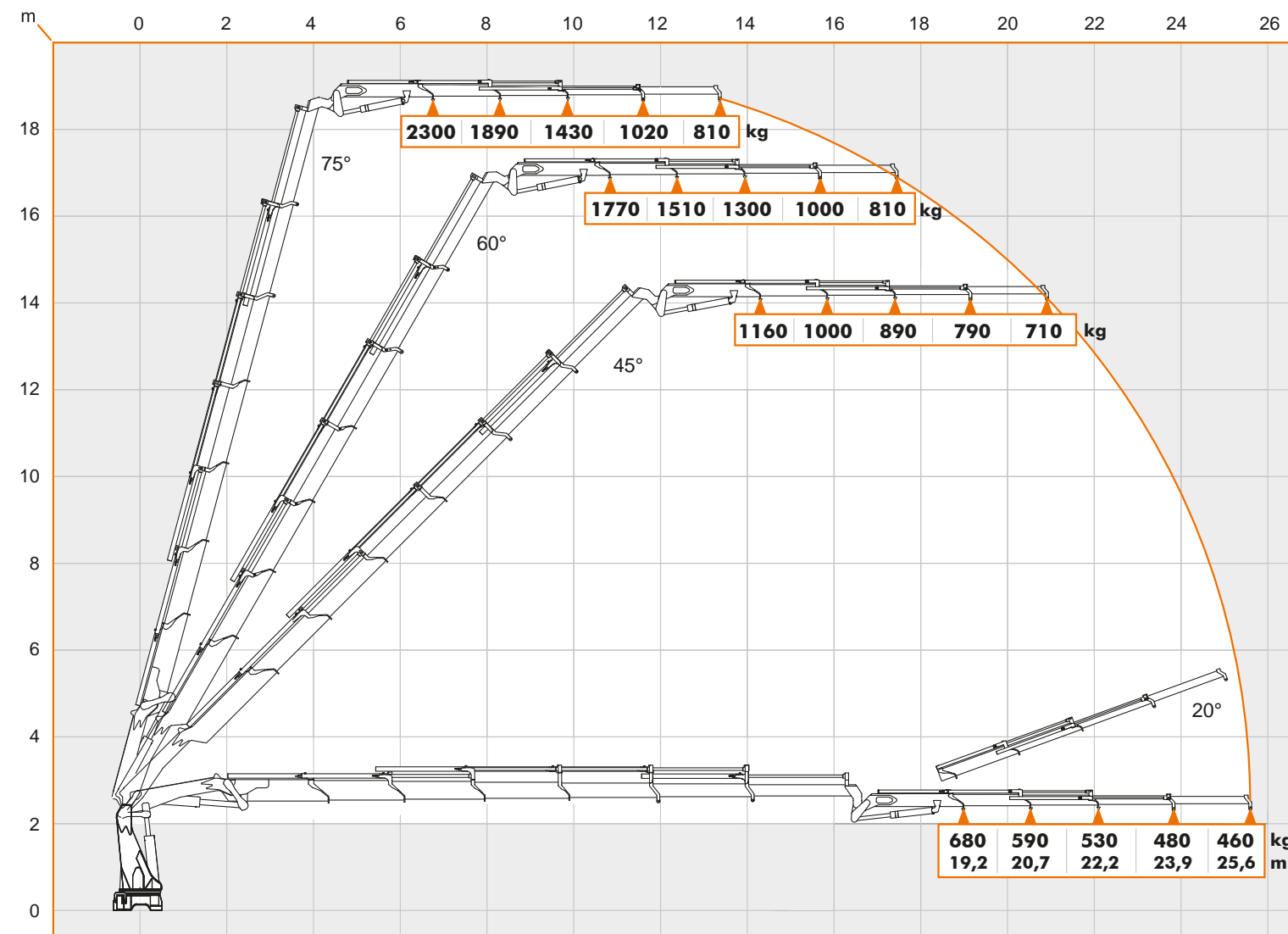
**A8**

**ATLAS**

# LASTDIAGRAMME

Load Diagrams-Diagramme de charges-El diagrama de cargas

**A6/Z4**



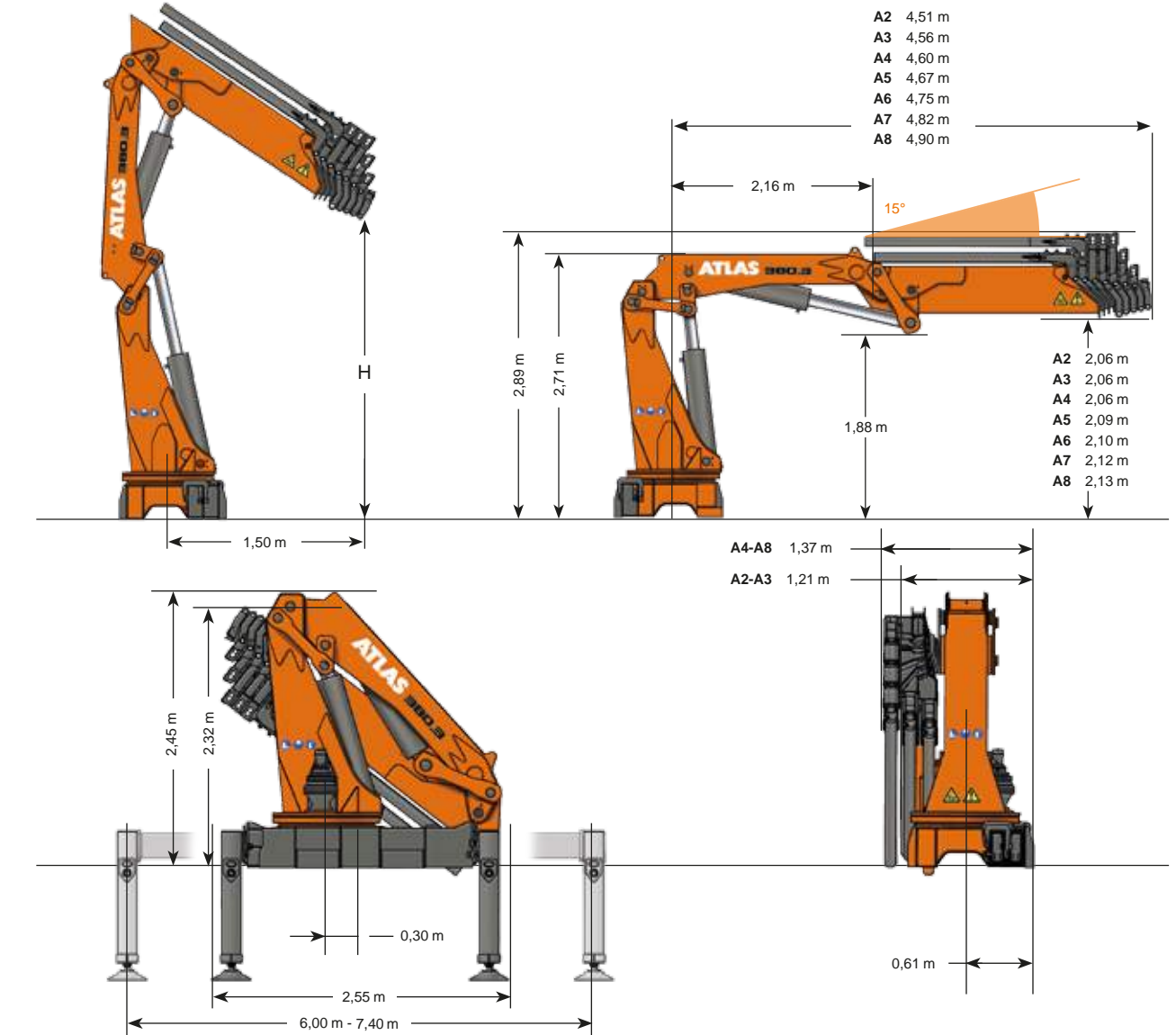
**Kg** - Traglast/Lifting capacity/En soulevant la capacité /Levantando capacidad in "Kg"  
**m** - Mass/Measurement/Des mesure/De medición in "m"

**ATLAS**

# ABMESSUNGEN

Dimensions - Dimensions - Dimensiones

**LADEKRAN AK 380.3E**



	AK 380.3E	HC1-HD4					
Gewicht Weight Poids Peso	H	Betriebsdruck Operating pressure Pression de service Presión de servicio	Ölfördermenge Oil supply amount Débit d'huile Caudal de aceite	Schwenkbereich Swivel range Plage de pivotement Alcance de giro	Schwenkmoment Swivel moment Couple de pivotement Par de giro momento	Hubmoment Lifting moment Momento de elevación Momento de sollevamento	
Typ	<b>Kg</b>	<b>m</b>	<b>bar</b>	<b>l/min</b>	<b>kNm</b>	<b>kNm</b>	<b>mt</b>
<b>A2</b>	3790	-				355,1	36,2
<b>A3</b>	4090	-				353,1	36,0
<b>A4</b>	4250	3,03				351,2	35,8
<b>A5</b>	4450	2,93	320	bis	47,7	335,5	34,2
<b>A6</b>	4650	2,83		120		332,5	33,9
<b>A7</b>	4810	2,74				330,6	33,7
<b>A8</b>	4950	2,64				322,7	32,9
<b>A6/Z4</b>	5780	-				-	-

Einfaches Grundgerät im Lasthakenbereich /  
 Simple basic unit for loadhook work /  
 Type de base simple avec crochet /  
 Maquina base para trabajo con gancho

**ATLAS**

**- AVAILABLE & COST EFFECTIVE -**

**ATLAS**